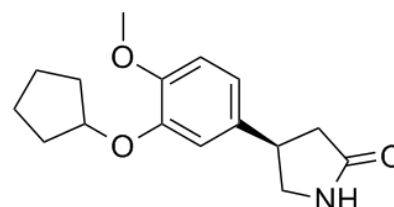


Product Name : (R)-(-)-Rolipram
Cat. No. : PC-45081
CAS No. : 85416-75-7
Molecular Formula : C₁₆H₂₁NO₃
Molecular Weight : 275.3428
Target : Phosphodiesterase (PDE)
Solubility : DMSO: ≥ 49 mg/mL



Biological Activity

A more active enantiomer of the PDE4 inhibitor rolipram; shows 2-10-fold more potent than the S-(+) enantiomer rolipram.
Asthma
Phase 2 Clinical

References

- Schneider HH, et al. Eur J Pharmacol. 1986 Aug 7;127(1-2):105-15.
Owens RJ, et al. Biochem J. 1997 Aug 15;326 (Pt 1):53-60.
Ohsawa F, et al. Jpn J Pharmacol. 1998 Jun;77(2):147-54.

Caution: Product has not been fully validated for medical applications. Lab Use Only!

E-mail: tech@probechem.com